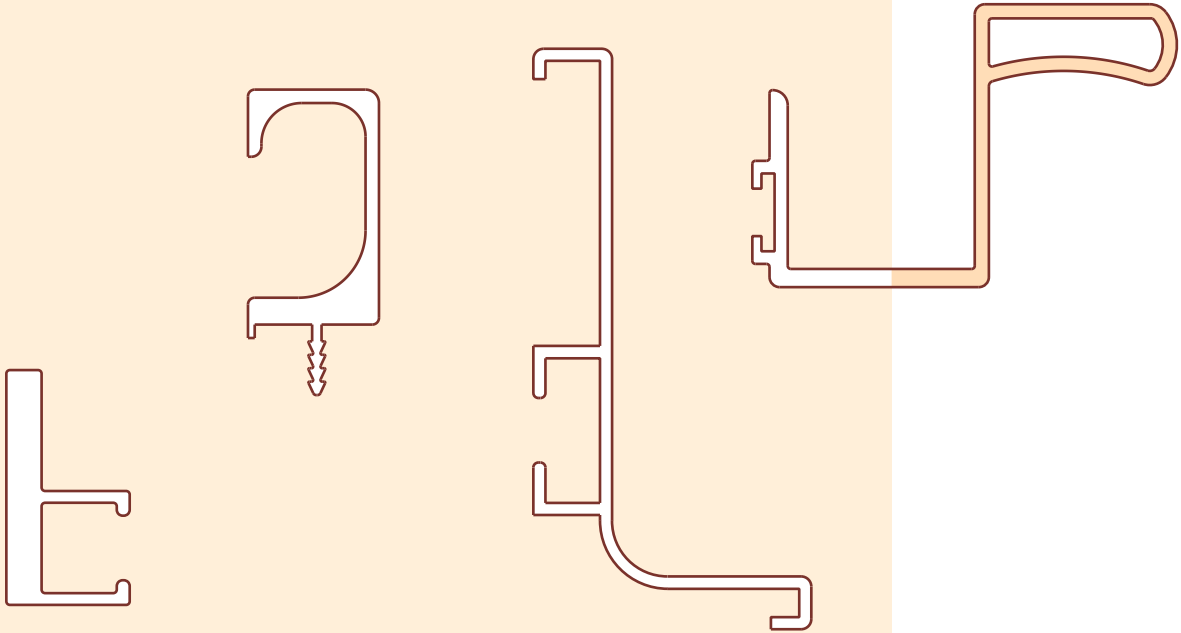


ALUMINIUM PROFILES



4

2



3

1

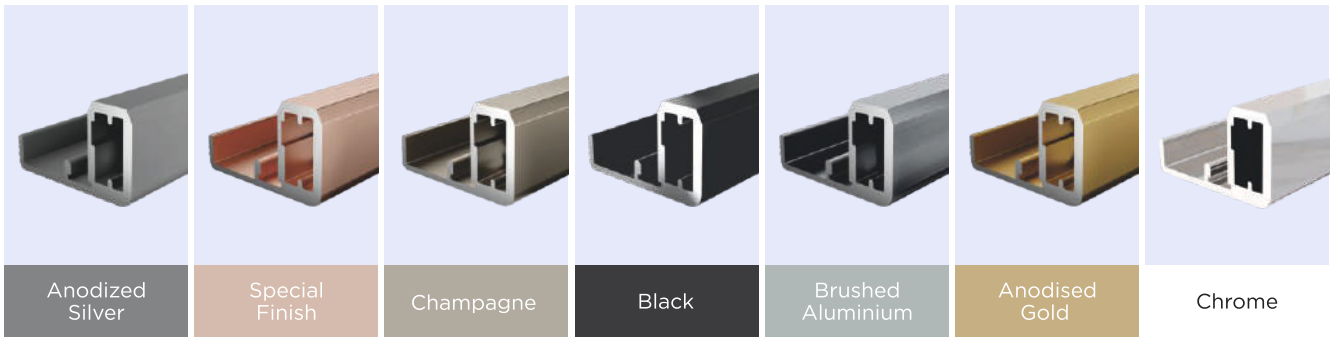


CONTENTS

1.	Aluminium Profile Glass Shutter	4-7
2.	Decorative Profiles	8-9
3.	Gola Profiles	10-11
4.	Wardrobe Shutter Profiles	12-13
5.	Shutter Handles	14-15

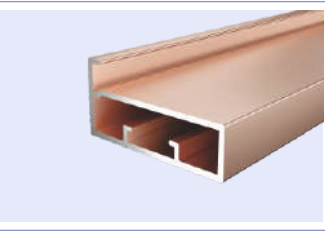
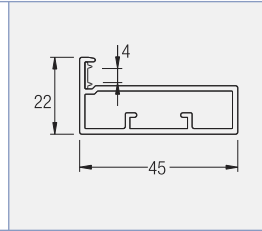
5

ALUMINIUM PROFILE GLASS SHUTTER



		Aluminium Profile Glass Shutter Euro 45mm	Code No.	Length	Glass Thickness (mm)	Finish
			EGSP-4-45-3M*	3mtr	4.0	AS/AB/SF/CP/BA/AG

		Aluminium Profile Glass Shutter Euro 45mm with handle	Code No.	Length	Glass Thickness (mm)	Finish
			EGSP-4-45H-3M*	3mtr	4.0	AS/AB/SF/CP/BA/AG

		Aluminium Profile Glass Shutter 45mm Slim Line	Code No.	Length	Glass Thickness (mm)	Finish
			GSP1-4-45S-3M*	3mtr	4.0	SF

*Add after code : AS for Anodised Silver, SF for Special Finish, CP for Chrome , AB for Anodized Black, BA for Brushed Aluminium, AG for Anodised gold.

ALUMINIUM PROFILE GLASS SHUTTER

		Aluminium Profile Glass Shutter 45mm Slim Line with handle	Code No.	Length	Glass Thickness (mm)	Finish
			GSP1-4-45SH-3M*	3mtr	4.0	SF

		Aluminium Profile Glass Shutter 1345	Code No.	Length	Glass Thickness (mm)	Finish
			GSP-1345-3M*	3mtr	4.0	AS

		Aluminium Profile Glass Shutter 1345 with handle	Code No.	Length	Glass Thickness (mm)	Finish
			GSP-1345H-3M*	3mtr	4.0	AS

		Aluminium Profile Glass Shutter Euro 50mm*	Code Nos.	Length	Glass Thickness (mm)	Finish
			EGSP-4-50-3M*	3mtr	4.0	AS/AB/SF/CP/BA

		Aluminium Profile Glass Shutter Euro 50mm with handle*	Code No.	Length	Glass Thickness (mm)	Finish
			EGSP-4-50H-3M*	3mtr	4.0	AS/AB/SF/CP/BA

		Aluminium Profile Glass Shutter 50mm*	Code No.	Length	Glass Thickness (mm)	Finish
			GSP1-4-50-3M*	3mtr	4.0	AS/AB/SF/CP/BA

		Aluminium Profile Glass Shutter 50mm with handle*	Code No.	Length	Glass Thickness (mm)	Finish
			GSP1-4-50H-3M*	3mtr	4.0	AS/AB/SF/CP/BA

*Add after code : AS for Anodised Silver, SF for Special Finish, CP for Chrome , AB for Anodized Black, BA for Brushed Aluminium, AG for Anodised gold.

ALUMINIUM PROFILE GLASS SHUTTER

		Aluminium Profile Glass Shutter 8-50mm*	Code No.	Length	Glass Thickness (mm)	Finish
			GSP1-8-50-3M*	3mtr	8.0	AS/BL/SF
		Aluminium Profile Glass Shutter 8-50mm with handle*	Code No.	Length	Glass Thickness (mm)	Finish
			GSP1-8-50H-3M*	3mtr	8.0	AS/BL/SF
		Aluminium Glass Shutter Profile 2 (Angled profile)	Code No.	Length	Glass Thickness (mm)	Finish
			GSP2-4-40-AP*	3mtr	4.0	AS/AB/SF/CP/BA
		Aluminium Glass Shutter Profile 2 (Horizontal profile)	Code No.	Length	Glass Thickness (mm)	Finish
			GSP2-4-40-HP*	3mtr	4.0	AS/AB/SF/CP/BA
		Aluminium Glass Shutter Profile 2 Handle	Code No.	Length	Glass Thickness (mm)	Finish
			GSP2-4-40-H*	148mm	-	AS/AB/SF/CP/BA
		Aluminium Frame for Hinge for Aluminium profile 3D	Code No.	Length	Glass Thickness (mm)	Finish
			HAP-4-22-2*	3mtr	4.0	AS/AB/SF AG/CP/BA/CH
		To use with Hinge For Aluminium Profile - 3D. Item Code : (HAP 1/2)				
		Aluminium Frame with Handle for Hinge for Aluminium profile 3D	Code No.	Length	Glass Thickness (mm)	Finish
			HAP-4-22H-2*	3mtr	4.0	AS/AB/SF AG/CP/BA/CH
		To use with Hinge For Aluminium Profile - 3D. Item Code : (HAP 1/2)				

*Add after code : AS for Anodised Silver, SF for Special Finish, CP for Chrome , AB for Anodized Black, BA for Brushed Aluminium, AG for Anodised gold.

ALUMINIUM PROFILE GLASS SHUTTER

		Aluminium Glass Shutter Profile with 4mm Sleeve for recessed Hinge	Code No.	Length	Glass Thickness (mm)	Finish
			RCH-AGP*	3mtr	4.0	AS/SF/TN/CP
To use with Recessed Hinge - Soft Close (Item code : RH-SC-TN)						

		Aluminium Glass Shutter Profile with Handle Sleeve for recessed Hinge	Code No.	Length	Glass Thickness (mm)	Finish
			RCH-AGP-H*	3mtr	4.0	AS/SF/TN/CP
To use with Recessed Hinge - Soft Close (Item code : RH-SC-TN)						

*(PVC Seals for Aluminium Profile Glass Shutter is inclusive)

		Sleeve for 4mm Glass	Code No.	Glass Thickness (mm)	Finish
			GSP-SL4-3M	4mm	CL

		Sleeve for 8mm Glass	Code No.	Glass Thickness (mm)	Finish
			GSP-SL8-3M	8mm	CL

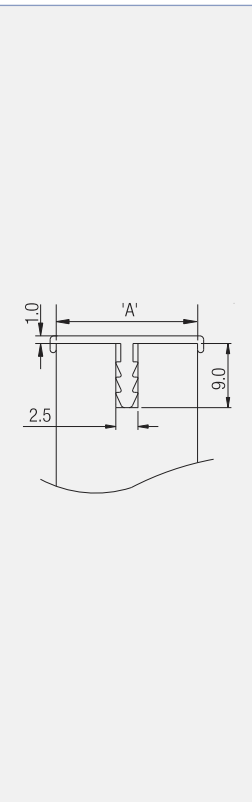
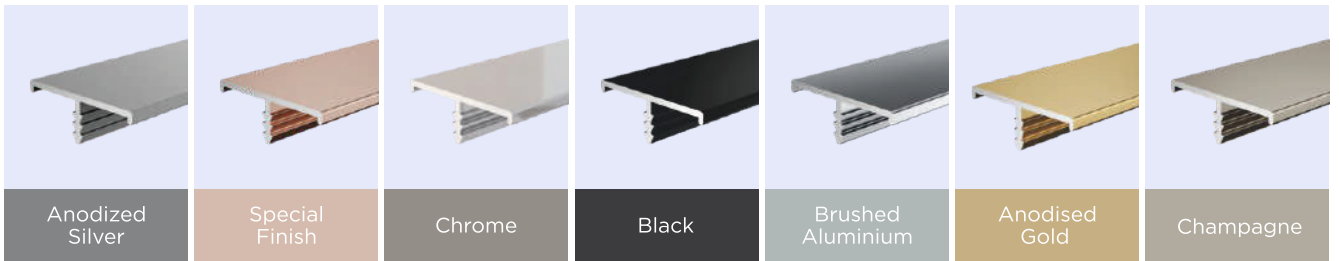
		Sleeve for Slim Line	Code No.	Glass Thickness (mm)	Finish
			GSP-SL4S-3M	4mm	CL

		Corner Bracket for glass shutter profile	Code No.	Size (mm)	Finish
			GSP-CBMA	62 x 62	ZW
SINGLE HOLE CONNECTOR					

		Corner Bracket for glass shutter profile	Code No.	Size (mm)	Finish
			GSP-CBM2	76 x 76	ZW
DOUBLE HOLE CONNECTOR					

*Add after code : AS for Anodised Silver, SF for Special Finish, CP for Chrome, AB for Anodized Black, BA for Brushed Aluminium, AG for Anodised gold.

DECORATIVE PROFILES

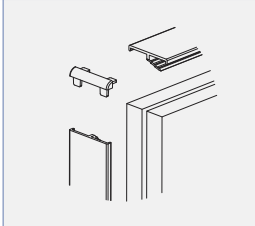
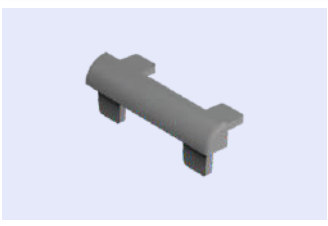


Aluminium Profile Edge

Code Nos.	"A" mm	Finish
EP1-1901-3M*	18.5	AS/AB/CP/ BA/SF/AG/CH
EP1-2201-3M*	20.2	
EP1-2501-3M*	25.5	

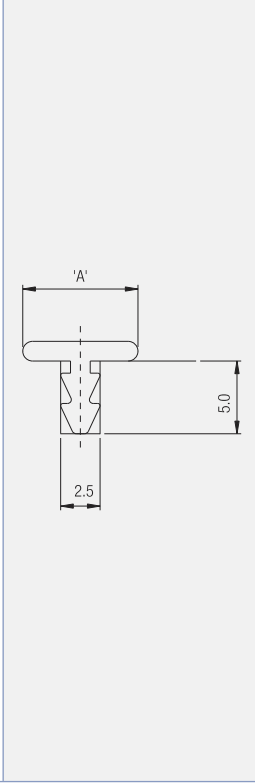
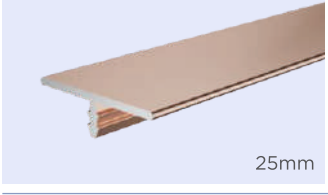
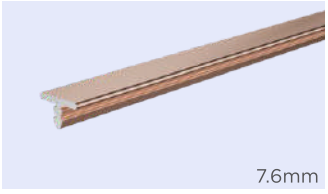
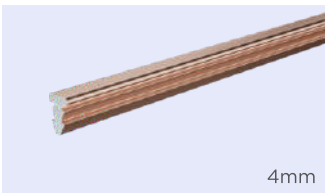


*Add after code : AS for Anodised Silver, SF for Special Finish, CP for Chrome , AB for Anodized Black, BA for Brushed Aluminium, AG for Anodised gold.



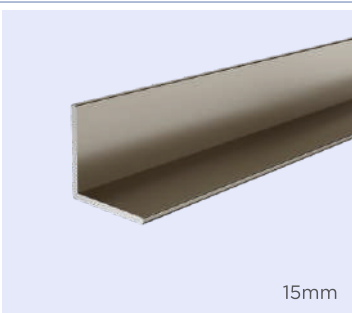
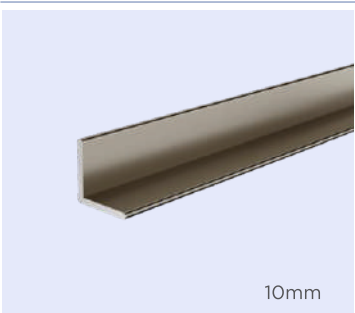
Corner For Edge Profile

Code Nos.	Finish
EP-C19	BL/SF/SL/ GF/CH



Aluminium Profile Decorative

Code Nos.	A	Finish
DP1-4-3M	4mm	AS/AB/CP/ BA/SF/AG/CH
DP1-7.6-3M	7.6mm	
DP1-12-3M	12mm	
DP1-25-3M	25mm	

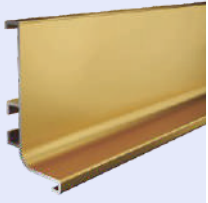
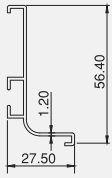



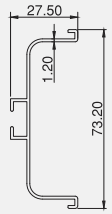
	Code Nos.	Size in mm	Finish
Aluminium Profile Decorative 'L' 10	DPL-10-3M	10 x 10	AS/AB/SF/ AG/CP/CH
Aluminium Profile Decorative 'L' 15	DPL-15-3M	15 x 15	

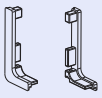
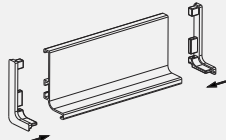
*Add after code : AS for Anodised Silver, SF for Special Finish, CP for Chrome , AB for Anodized Black, BA for Brushed Aluminium, AG for Anodised gold.

GOLA PROFILES



		Horizontal Gola 3 L	Code Nos.	Length	Finish
			HG3L*	3mtr	AS/WM/AT/ AB/SF/CH/AG

		Horizontal Gola 3 C	Code Nos.	Length	Finish
			HG3C*	3mtr	AS/WM/AT/ AB/SF/CH/AG

		Horizontal Gola 3 End Cap for L	Code Nos.	Finish
			HG3L-EC*	AS/WM/AT/BL/SF/CH/GF

*Add after code : AS for Anodised Silver, SF for Special Finish, CP for Chrome , AB for Anodized Black, BA for Brushed Aluminium, AG for Anodised gold.


		Horizontal Gola 3 End Cap for C	Code Nos.	Finish
			HG3C-EC*	AS/WM/AT/BL/SF/CH/GF

		Horizontal Gola 3 Mounting Bracket	Code Nos.	Finish
			HG3-MB	ZW


		Vertical Gola Profile C	Code Nos.	Length	Finish
			VG1C-3M*	3mtr	AS/AT/ CP/SF/WM

		Vertical Gola Profile L	Code Nos.	Length	Finish
			VG1L-3M*	3mtr	AS/AT/ CP/SF/WM

		Aluminium Profile Cabinet Edge	Code Nos.	Length	Finish
			EP-1819L*	3mtr	AS/AT/WH/ CP/SF/AB/ CH/ AG



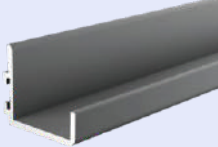
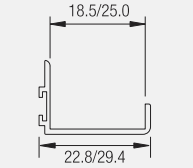
		Aluminium Profile Cabinet Edge with Bumper	Code Nos.	Length	Finish
			EP-1822L*	3mtr	AS/AT/WH/ CP/SF/AB/ CH/ AG



*Add after code : AS for Anodised Silver, SF for Special Finish, CP for Chrome , AB for Anodized Black, BA for Brushed Aluminium, AG for Anodised gold.

WARDROBE SHUTTER PROFILES



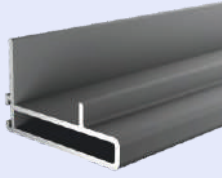
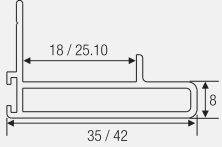
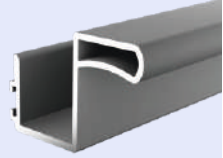
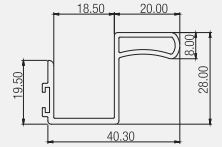
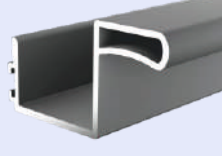
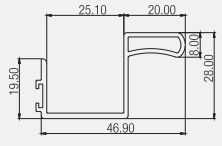
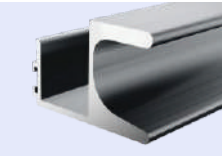
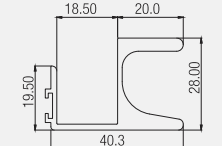
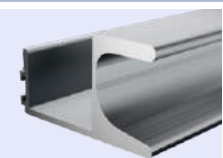
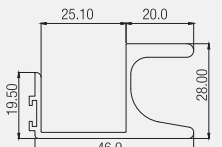
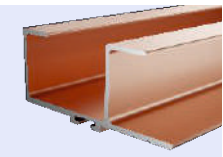
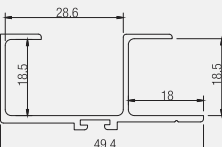

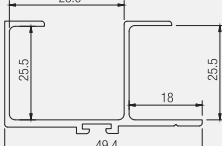
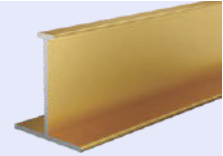
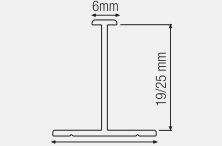
			Code Nos.	Length	Finish
		Aluminium Profile Edge for Wardrobe Sliding- 19mm	WS-E19-3M/36	3mtr & 3.6mtr	AS/AB/CP/CH/BA/SF/AG
		Aluminium Profile Edge for Wardrobe Sliding- 25mm	WS-E25-3M/36	3mtr & 3.6mtr	

			Code Nos.	Length	Finish
		Aluminium Profile Handle for Wardrobe Sliding- 19mm	WS-H19-3M/36	3mtr & 3.6mtr	AS/AB/CP/CH/BA/SF/AG
		Aluminium Profile Handle for Wardrobe Sliding- 25mm	WS-H25-3M/36	3mtr & 3.6mtr	

		End Cap For Al. Profile Wardrobe Sliding 19/25	Code Nos.	Finish
			WS-EC	GR/BL/BR

*Add after code : AS for Anodised Silver, SF for Special Finish, CP for Chrome , AB for Anodized Black, BA for Brushed Aluminium, AG for Anodised gold.

WARDROBE SHUTTER PROFILES

			Code Nos.	Finish
		Al. Profile Handle for Wardrobe Sliding 2 - 19mm	WS2-H19-3M*	AS/AB/CP/SF/AG
		Al. Profile Handle for Wardrobe Sliding 2 - 25mm	WS2-H25-3M*	AS/AB/CP/SF
		End Cap	WES2-C19/25*	GR/BL/BR
			Code Nos.	Finish
		19mm Wardrobe Edge Profile with Inset Handle	WEP-19HI-3M*	AS/CP/BA/CH/SF/AG
			Code Nos.	Finish
		25mm Wardrobe edge Profile with Inset Handle	WEP-25HI-3M*	AS/CP/BA/CH/SF/AG
			Code Nos.	Finish
		19mm Wardrobe edge Profile with Inset Handle 2	WEP-19HI-2-3M*	AS/CP/BA/CH/SF/AG
			Code Nos.	Finish
		25mm Wardrobe edge Profile with Inset Handle 2	WEP-25HI-2-3M*	AS/CP/BA/CH/SF/AG
			Code Nos.	Finish
		19mm Wardrobe edge Profile with Inset Handle 3	WEP-19HI-3-3M*	AS/AB/CP/SF
			Code Nos.	Finish
		25mm Wardrobe edge Profile with Inset Handle 3	WEP-25HI-3-3M*	AS/AB/CP/SF
			Code Nos.	Finish
		Al. profile for wardrobe Sliding Partition 19/25mm	WSP-19-3M/36*	AS/AB/CP/BA/CH/SF/AG
			WSP-25-3M/36*	

*Add after code : AS for Anodised Silver, SF for Special Finish, CP for Chrome , AB for Anodized Black, BA for Brushed Aluminium, AG for Anodised gold.

SHUTTER HANDLES



	 <p>Technical drawing showing dimensions: 19.0 (width), 35.0 (height), 9.0 (from front face), 12 (depth), and 2.5 (thickness).</p>	<p>Aluminium Profile Shutter Handle 1935 with End Cap</p>	Code Nos.	Finish
			SH1 - 1935-3M*	AS/CP/BA/SF/AG/CH/AB
			EC-1935*	CP/BA/SF/SL/GF/BL/CH

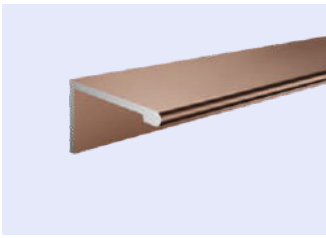
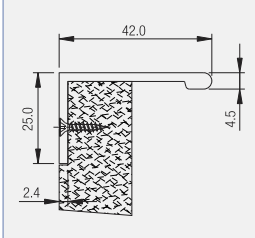
	 <p>Technical drawing showing dimensions: 47.0 (height), 1.6 (flange thickness), 11.2 (flange width), 10.0 (depth), 18.0 (width), and 20.8 (total width).</p>	<p>Aluminium Profile Shutter Handle - 1937</p>	Code Nos.	Finish
			SH-1937-H-3M*	AS/AB/CP/BA/SF/AG/CH

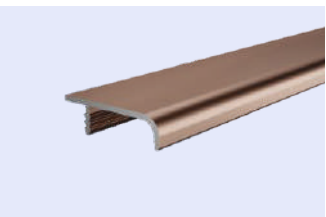
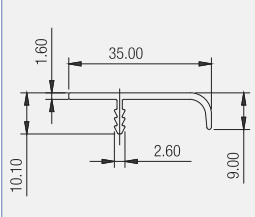
	 <p>Technical drawing showing dimensions: 19.0 (width), 33.6 (height), 1.6 (flange thickness), 7.0 (flange width), 9.9 (depth), 9.5 (width), and 20.6 (total width).</p>	<p>Aluminium Profile Shutter Handle - 1934</p>	Code Nos.	Finish
			SH-1934*	

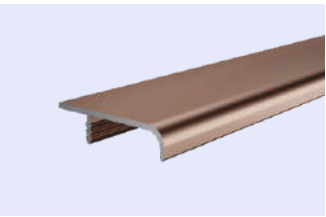
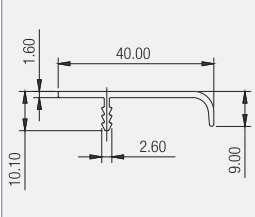
*Add after code : AS for Anodised Silver, SF for Special Finish, CP for Chrome , AB for Anodized Black, BA for Brushed Aluminium, AG for Anodised gold.

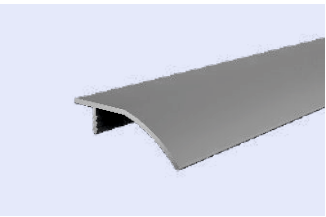
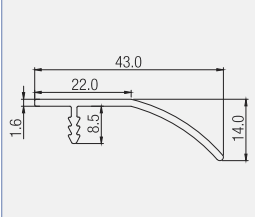
SHUTTER HANDLES

		Aluminium Profile Shutter Handle - 1935 ST	Code Nos.	Finish
			SHST-1935-3M*	AS/CP/BA/SF/CH/AG

		Shutter Edge Handle - 442	Code Nos.	Finish
			SEH-442-3M*	AS/CP/SF

		Edge Profile Handle 18mm	Code Nos.	Finish
			EPH-18-3M	AS/SF/AG/CP/BA

		Edge Profile Handle 25mm	Code Nos.	Finish
			EPH-25-3M	AS/SF/AG/CP/BA

		Edge Profile Handle 2	Code Nos.	Finish
			EPH2-18	

*Add after code : AS for Anodised Silver, SF for Special Finish, CP for Chrome , AB for Anodized Black, BA for Brushed Aluminium, AG for Anodised gold.

Experience MORE



Click / Scan to explore Kids Furniture Handles



KIDS FURNITURE HANDLES



Click / Scan to explore Aluminium Handles



ALUMINIUM HANDLES



Click / Scan to explore Zinc Handles



ZINC HANDLES

